

**NON MAINTAINED SELF TESTING SPOT LIGHT  
EMERGENCY LUMINAIRES WITH 1 WHITE POWER LED**



**TECHNICAL CHARACTERISTICS FOR LED MODULE SPECS (see page 4)**

	<b>GR-290</b>	<b>GR-291</b>	<b>GR-292</b>	<b>GR-293</b>
OPERATION VOLTAGE	220-240V AC / 50-60Hz			
MAXIMUM POWER CONSUMPTION	3.7W / 4.1 VA			
BATTERY (NI-MH)	4.8V/1.2Ah			
BATTERY PROTECTION	Deep discharge and overcharge protection			
INDICATIONS - CONTROLS	Charge, lamp fault, battery fault, TEST button			
CHARGE TIME	24 hours			
MINIMUM DURATION	1.5 hour			3 hours
LIGHT SOURCE	1 white power LED			
EMERGENCY ILLUMINATION	270lm			160lm
DEGREES OF COVER PROTECTION	IP 42			
PRODUCED IN ACCORDANCE WITH	EN 60598-1, EN 60598-2-22, EN 55015, EN 61547, EN 61000-3-2, EN 61000-3-3			
OPERATION TEMPERATURE RANGE	5 to 40 °C			
RELATIVE HUMIDITY	Up to 95%			
CONSTRUCTION MATERIAL	Bayblend FR3010, clear polycarbonate			
EXTERNAL DIMENSION	Ø125 x 65 mm			
WEIGHT	450gr.			
GUARANTEE	3 years (1 year for the battery)			

**Congratulations for your selection to buy this product.  
Olympia Electronics - European manufacturers.**

**GENERAL**

These devices are used indoors (ta 40°C) in places where emergency luminaires are needed. The luminaires GR-290 and GR-292 are suitable for corridors lighting and the GR-291 and GR-293 for open area lighting. Each device must be permanently connected to mains power supply. In normal operation the battery is charging. In case of a mains power supply failure the device will light the illumination led automatically in emergency mode. When the mains power supply is restored the device turns to normal operation.

**INSTALLATION**

To install the luminaire follow the installation instructions on page 2.

**Battery Charging**

The battery charging is completely controlled. In this case, is achieved the perfect battery maintenance, as well as the elongation of its duration. When the battery has completely charged, it charges with a maintenance current.

**Battery Cut-off**

The device in this operation when the mains power supply fails and battery has lost its energy. During this operation the device enters the idle state and battery

consumption is negligible, in order to be protected from deep discharge.

**Manual Test**

This test can be done by pushing the test button. The light source and the emergency circuit of the device is monitored. The manual test can be conducted only if the main power supply and the battery is connected. During this test period all indication LEDs are OFF.

**Automatic Operational Test**

This test includes all the operations that provide the manual test and is conducted automatically every 15 days. In order to be performed, the mains power supply and the battery should be connected.

**Automatic Autonomous Test**

The Automatic Autonomous Test is conducted and measures the device's back up operation and emergency duration. The BATTERY FAULT LED blinks during the measurement, indicating this process to the user. This test is conducted automatically every six months. In order to be performed, the mains power supply and the battery should be connected and fully charged. If the battery is not fully charged, the test is postponed until the battery is completely charged. If during this test, the autonomy is

less than the nominal then the battery fault led turned on continuously and the battery must be replaced.

### Back Up Operation

The autonomous duration of battery during emergency mode is at least the one that is stated in the list of the technical characteristics. During emergency mode, a light source test is also performed.

### Resetting Errors

Push the Test button for >10 seconds, to delete all the indicated LED errors. Then the device enters regular operation mode.

### Test Switch

Pressing the test switch less than 5 seconds will initiate a light source test (last for 3 secs). If the test switch is pressed for more than 10 seconds, the device will be reset (delete all errors).

### ATTENTION!!!

1. Operations for installation, maintenance or testing must be done by authorized personnel only.
2. The device must be connected to the mains power supply through a fuse dependent by the total amount of the line's power load.
3. The replacement of the battery and the

light source must be done using parts of the same type, by the manufacturer or by a competent person.

4. In case of inactive use for a period greater than 2 months, disconnect the battery by pulling out the battery's connector.

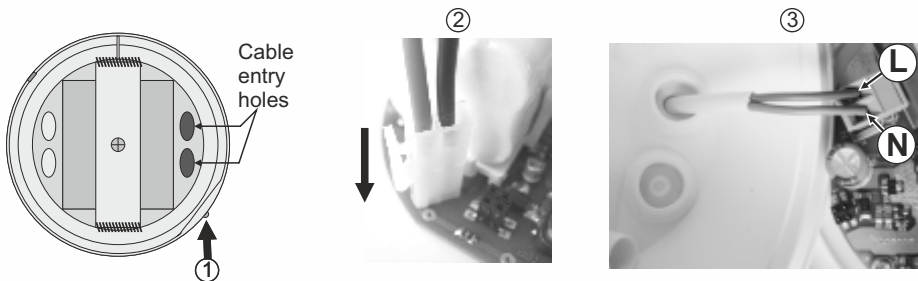
5. **It is not allowed to discard batteries into common trash bins, they must be discarded only in battery recycling points. Do not incinerate.**



*The light source contained in this luminaire shall only be replaced by the manufacturer, or his agent, or a similar qualified person.*

*NOTE! The light source is non-user replaceable.*

## INSTALLATION INSTRUCTIONS



### Initial installation

- ① Untighten the screw but do not remove it and pull up the reflector.
- ② Place the battery's connector to the corresponding connector on the P.C.B.
- ③ **Always use in any case round mains cable, with a diameter of 5-10mm (H05RN-F type 2x1mm<sup>2</sup> or any other type, at least equal to it's mechanical and electrical properties). ATTENTION!! The cable must not be deformed in any way (This requirement is important to ensure the IP rating).** Install the included gaskets in to the cable entry holes (*verify that are not deformed*). Make a hole in the center by using a small screwdriver. Pass the round cable through the gasket. Detach the power terminal, connect the wires as shown in the picture and attach the power terminal (10A max).
- ④ Refit the reflector (mind the correct orientation), tighten the screw securely and the luminaire is ready for mounting.

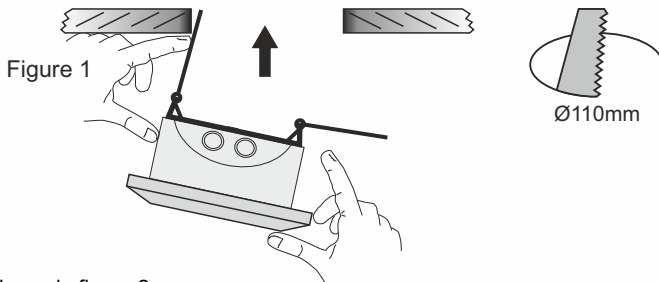
**NOTE!! After finishing the installation you must power the luminaire for, at least, 24 hours for battery charging to perform the nominal autonomy.**

### Mounting the lamp in suspended ceiling.

Set up the lamp to the suspended ceiling as it is shown bellow (*Required opening 110mm*):

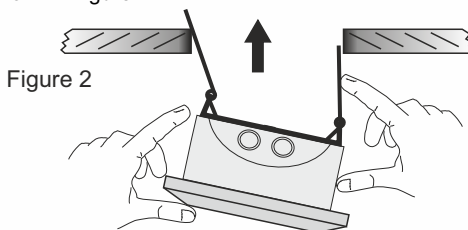
#### Step 1

Bend the springs, to get into the hole of the suspended ceiling, as you can see to the next figure.



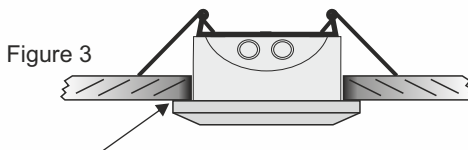
#### Step 2

Push up the luminaire, as shown in figure 2.



#### Step 3

Continue to push upwards until the lamp locks.



If you want to pull off the device, put a flat blade screwdriver, between the device and the ceiling.

### Surface mounting.

Install the luminaire according to the following steps:

**Step 1.** Follow the step 1 of the installation instructions.

**Step 2.** Unfasten the retaining screw (Photo 1) and detach the part for suspended ceiling installation.

**Step 3.** Drill 2 holes on the base using a 4mm drill bit in order to permit the retaining screws to pass. Mark these two drilled points on the required mounting location, drill the holes and install the supplied plastic plugs. **ATTENTION!! Especially for the GR-290 and GR-292 luminaire installation on the ceiling you must align the base with the indications on the luminaire's base.**

**Step 4.** Install the decorative rim (package included) as shown on photo 1. Next, use the 2 fasteners to install the unit to the require location.

**Step 5.** Follow the steps 2,3 and 4 of the installation instructions.

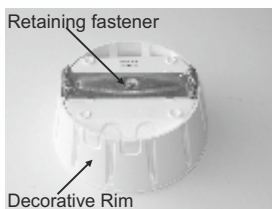


Photo 1



Photo 2

## Status of LEDs

LEDs	Description of indication
CHARGE	☀️: Battery charging, ○: battery charged, ○: disconnected or unfunctional battery
LAMP FAULT	☀️: Operation check, ○: lamp fault, ○: normal operation
BATT. FAULT	☀️: Autonomy test, ○: battery fault, ○: normal operation
Note	☀️: Blinking, ○: constantly on, ○: off

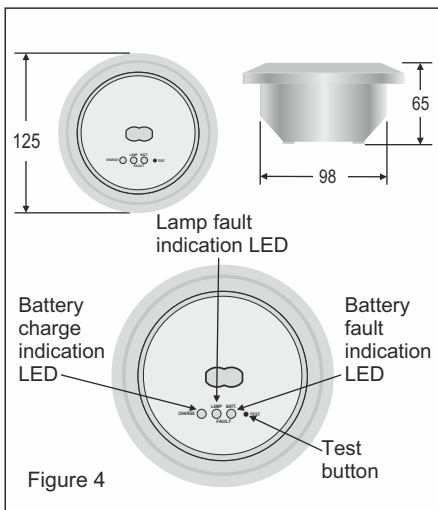
### Important notice for the installed luminaires in one area !!!

The installer must connect the battery's connector first and then should power the luminaire. The time between batteries connection must be, at least 1.5 minute. With this variation, it is ensured that the non synchronized Automatic Autonomous Test for two or more luminaires installed in one area, is not conducted in the same day.

### Battery replacement.

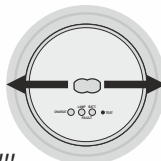
*It can be done only by a competent person and after the mains interruption.*

1. Remove the luminaire from the suspended ceiling (figure 3).
2. Follow the step 1 of the installation instructions.
3. Disconnect the connector and remove the old battery.
4. Connect the new battery with the same type (step 2 of the installation instructions) and place it in the position of the old one.
5. Replace the removed parts (step 1 and 4) and power the device.



### GR-290, GR-292

Corridor lighting

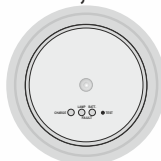


**ATTENTION!!!**

*During installation follow this light direction.*

### GR-291, GR-293

Open area lighting



**Caution - Class 1M LED radiation  
Do not view directly with bare eyes**

### LED MODULE CHARACTERISTICS

	GR-290	GR-291	GR-292	GR-293
Manufacturer	olympia electronics S.A			
Model Number	1110143		2704143	
Voltage Range	3-3.2VDC			
Nominal Power	2.2W		1.1W	
Connections	Non reversible connection between main pcb and led module			
Temperature (tc)	60 °C max. across the board		45 °C max. across the board	

**NOTE:** LED= Light Emitting Diode

**LABELING EXPLANATION:**

**X:** Self contained

**0:** Non maintained (\*)

**A:** Including test device

**\*90:** 1.5 hour duration

**180:** 3 hour duration

(\*) Non Maintained operation: The luminaire lights its illumination source, only in power supply's failure.

Maintained operation: The luminaire lights its illumination source, when it is powered by the mains power supply or not.

**WARRANTY**

Olympia Electronics guarantees the quality, condition and operation of the goods. The period of warranty is specified in the official catalogue of Olympia Electronics and also in the technical leaflet, which accompanies each product. This warranty ceases to exist if the buyer does not follow the technical instructions included in official documents given by Olympia Electronics or if the buyer modifies the goods provided or has any repairs or re-setting done by a third party, unless Olympia Electronics has fully agreed to them in writing. Products that have been damaged can be returned to the premises of our company for repair or replacement, as long as the warranty period is valid.

Olympia Electronics reserves the right to repair or to replace the returned goods and to or not charge the buyer depending on the reason of defection. Olympia Electronics reserves the right to charge or not the buyer the transportation cost.

**HEAD OFFICE**

72nd km. O.N.R. Thessaloniki-Katerini

P.C. 60061 Greece

[www.olympia-electronics.gr](http://www.olympia-electronics.gr)

[info@olympia-electronics.gr](mailto:info@olympia-electronics.gr)