

MLD-28S/g, MLD-34S/g, MLD-44S/g

MAINTAINED ILLUMINATION SIGN WITH GREEN LEDs



TECHNICAL CHARACTERISTICS	MLD-28S/g	MLD-34S/g	MLD-44S/g
Mains voltage	220-240V AC/50-60Hz		
Maximum power consumption	7.5 VA	8 VA	
Batteries (Ni-Cd)	3.6V/1Ah		
Battery protection	Overcharging and full discharging protection		
Recharging time	24h		
Minimum emergency duration	3h		
Light source intensity	18lm/18lm	22lm/18lm	
Degrees of cover protection	IP 40		
Produced in accordance with	EN 60598-1, EN 60598-2-22		
Operation temperature range	0 to 40 °C		
Relative humidity	up to 95%		
External panel's dimensions	280x100mm	340x170mm	440x220mm
External dimensions	285x130x25mm	345x200x25mm	445x250x25mm
Typical weight	480gr.	820gr.	1140gr.
Guarantee	3 years (1 year for the battery)		

Operation instructions

These new sign illumination luminaires use a new technology, friendly to the environment, with high illuminated L.E.D.s. L.E.D. technology has very low power consumption.

The edge illumination sign is used as a maintained emergency lighting with indications symbols.

Each package contains arrows stickers which are used to quickly design the required sign which is suitable for each occasion.

Just place the sign on the figure which is designed on the packages and stick the arrow.

Each model combines modern, aesthetics, together with functionality. The exit illumination signs are used in every public area where clear direction and good appearance are important.

All models must be permanently connected to the mains power supply as shown on page 2.

The legend is screened on to a clear acrylic sheet which has the marking on the marking panel with the light that comes from the top of the luminaire and diffracts, giving light to the marking panel. The luminaire has an indication (CHARGE) for the charging of the battery and a (TEST) button to TEST the emergency circuit and the LED strip for good operation only when the luminaire is plugged in to mains power supply. The unit must be mounted in a clearly visible area and can either be hung on a ceiling or mounted on a wall depending on the requirements of the installation. The package includes all the required materials for mounting on the wall or on the ceiling. The pages 2 and 3 show us the mounting methods.

power line, for example 16A rating.

2. Every month, an optical and emergency mode operation check should be carried out by pressing the TEST button.

3. Every six months, a full duration check should be carried out by disconnecting the mains power supply. Count the autonomous duration of the luminaire and in case of no correspondence to stated emergency duration replace the battery.

4. During long periods of inactive use (i.e 6 months), disconnect the batteries from the units.

5. **Replaced batteries must not be thrown into trash bins. They must be returned to special battery disposal points.**

NOTE: LED= Light Emitting Diode

LABELING EXPLANATION:

X: Self contained

1: Maintained

A: Including test device

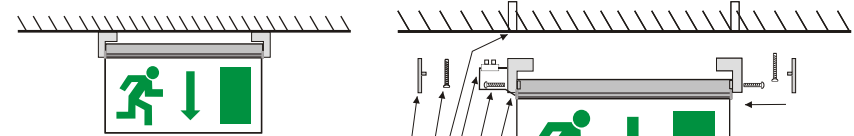
180: 3 hour duration

WARNING !!

1. The unit must be connected to a dedicated fused

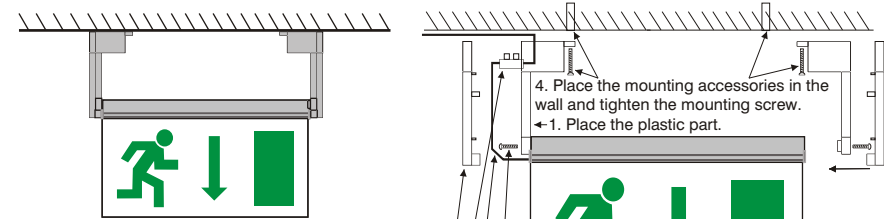
Mounting methods

Ceiling mounting

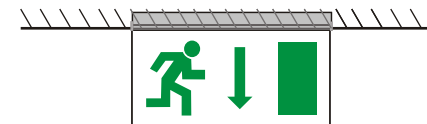


Hanging installation on suspended ceilings using the special mounting brackets contained in the package.

1. Place the plastic part.
2. Tighten the screw.
3. Pass the cable thru the knock out and connect the wires to the terminal block.
4. Place the mounting accessories on the wall and tighten the mounting screw.
5. Place the plastic cover.

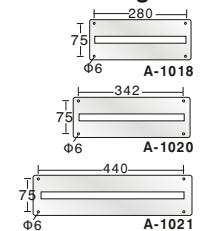


4. Place the mounting accessories in the wall and tighten the mounting screw.
1. Place the plastic part.
2. Tighten the screw.
3. Pass the cable in the canal.
5. Connect the wires to the terminal block.
6. Place the plastic cover after the opening of the knock out to pass the wires.

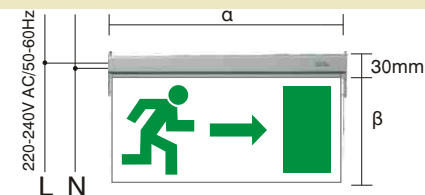


Recessed mounted installation on suspended ceilings using the base type A-1018, A-1020, A-1021

Suspended ceiling mounting bases



Electric connection and "Eco Light" dimensions (in mm)

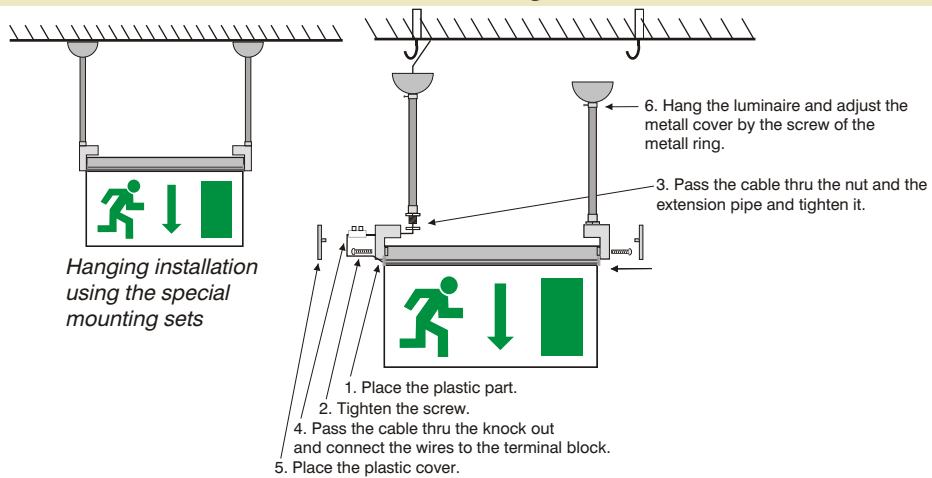


MLD-28 : 280(α) x 100(β)

MLD-34 : 340(α) x 170(β)

MLD-44 : 440(α) x 220(β)

Alternative mounting method



Hanging installation using the special mounting sets

Extension ability

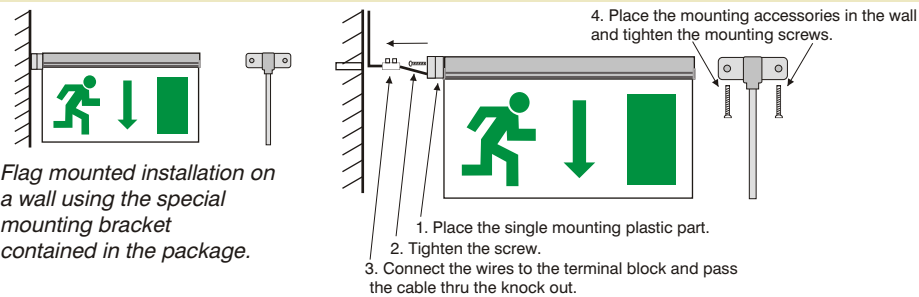
In recess mounting in suspended ceiling or in external ceiling mounting, we can use the **A-1022** extension set (20 cm), the **A-1025** extension set (40 cm), and the **A-1026** (60 cm) extension set after request.

TYPE	DESCRIPTION
A-1022	Extension set 20 cm.
A-1025	Extension set 40 cm.
A-1026	Extension set 60 cm.

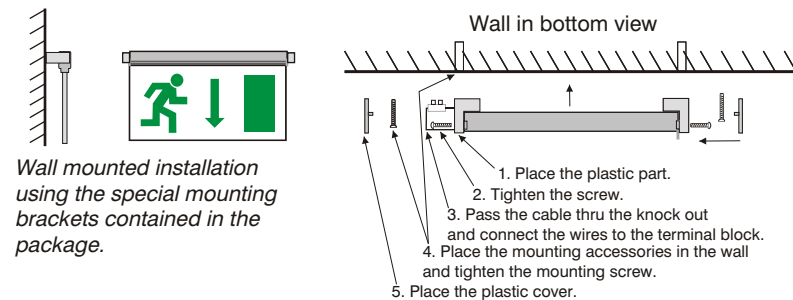
ATTENTION!!!

All metal parts must be connected to ground
A limited number of extensions can be used in order to maintain the stability of the luminaire.

Wall mounting

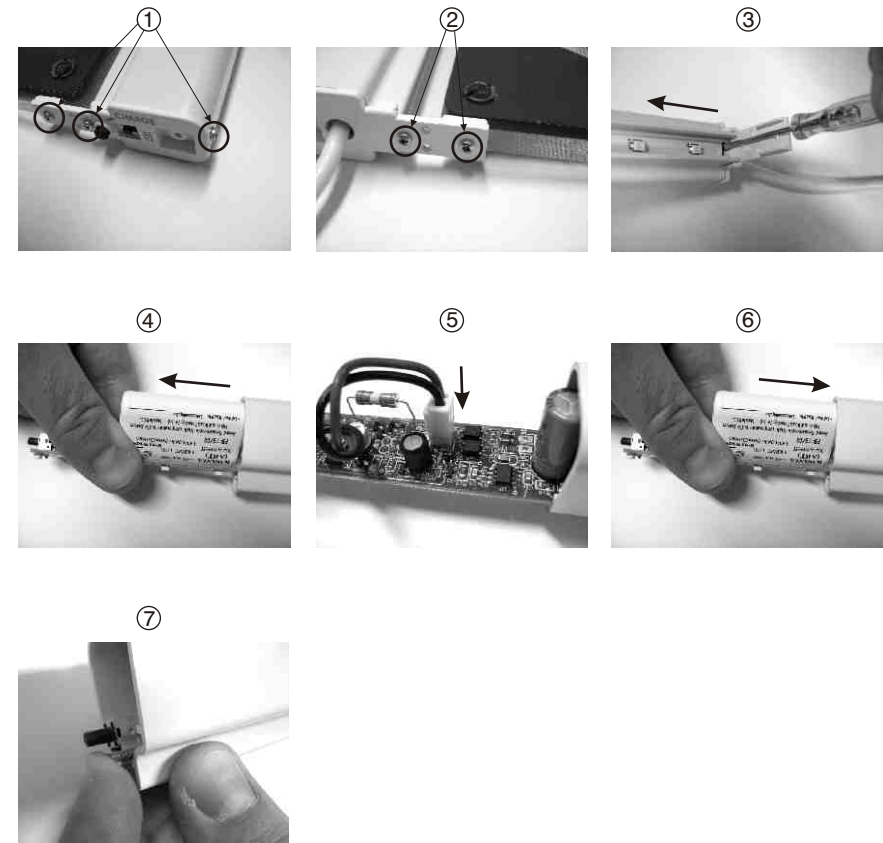


Flag mounted installation on a wall using the special mounting bracket contained in the package.



Wall mounted installation using the special mounting brackets contained in the package.

Battery replacement process



- ① Unfasten the 3 screws without moving the marking panel.
- ② Unfasten the 2 screws and remove the marking panel.
- ③ Slide out the led strip with a flat screwdriver.
- ④ Pull carefully the led strip by holding it from the two sides as shown in picture.
- ⑤ Remove the used battery and place a new one with the same type.
- ⑥ Push carefully the led strip by holding it from the two sides as shown in picture.
- ⑦ Push the led strip to face the edge of the plastic cover.

ATTENTION !!! Don't apply force to the test button.

Refit the marking panel and fasten the removed screws in steps 1 and 2.